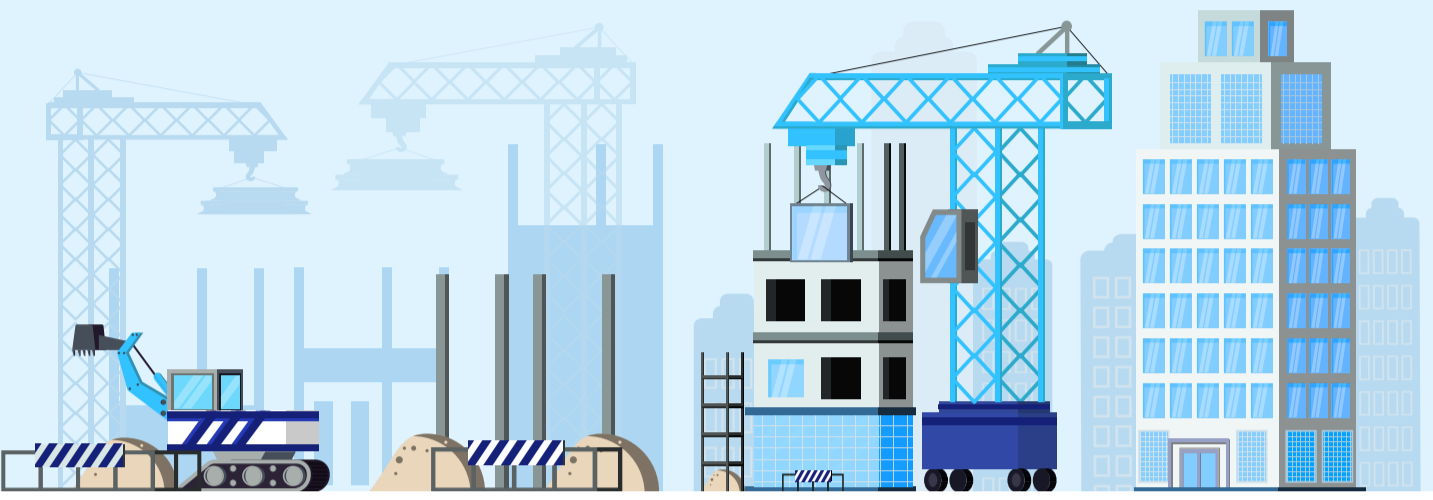


How Can PIM Help Building Product Manufacturers (BPM) Produce BIM-Ready Content?



What is Building Information Modeling (BIM)?

BIM is an intelligent 3D model-based process that enables architecture, engineering and construction (AEC) professionals to collaborate, create and manage construction and infrastructure projects such as buildings, bridges, highways or tunnels. It commonly involves creating and simulating prototypes in a virtual space.



Why is it critical for BPMs to produce BIM-ready content?



82% of AEC professionals worldwide said that BIM is the future of construction design process.



75% of BIM users (AEC professionals) said they need building product manufacturers to provide them with BIM objects.



13K buildings a day will have to be built by the AEC industry from 2018 through 2050 to accommodate the continuous rise in city population.

How does a PIM solution help produce BIM-ready content?

"Information" is at the heart of BIM projects. These projects use BIM objects, virtual representations of actual products, such as doors, walls, pipes, etc. They contain product and technical details and must accurately represent how products work in the real world. To create BIM objects, the following information is needed:



Geometrical information
such as height, length and width embedded with metadata.



Product information
such as installation instructions, operational guidelines, warranty and service data.



Visual information
such as rough/soft, opaque, transparent.

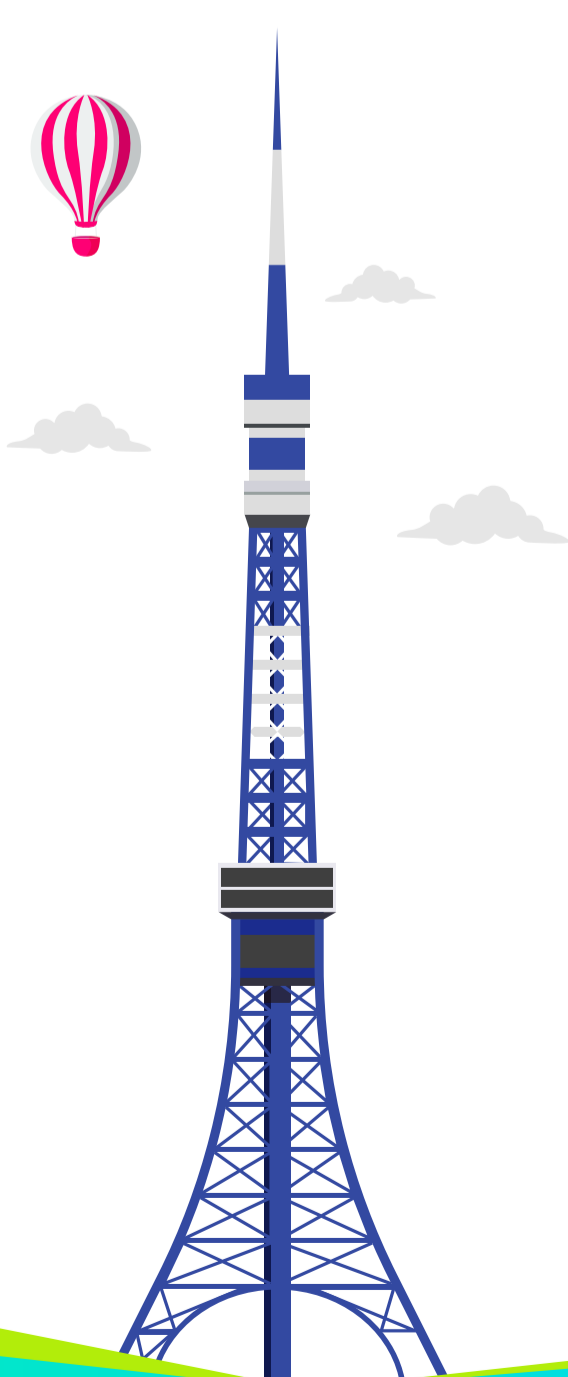


Functional information
such as opens/closes, dips/pops, slides.



Connection points
such as those that show how the product will fit and perform within the overall system.

PIM solutions ensure the product data used to create BIM objects is of the highest quality.



Import
Product data usually comes from different internal and external sources and systems. With PIM, BPMs can quickly onboard and consolidate data in a single repository.



Validate
BPMs manage high volumes of complex data and need to reconcile differences, inconsistencies and irregularities. A PIM provides the data quality tools required to maintain the accuracy, completeness and overall quality of product data.



Manage
There are several processes and multiple stakeholders involved in the development of BIM objects. BPMs can streamline activities by establishing workflows and defining tasks as well as creating hierarchy, data quality and localization standards.



Publish
Today's clients expect a seamless acquisition of information and this includes both 3rd party BIM object creators and AEC companies. Automated syndication and publication capabilities allow consistent and timely product content distribution to the relevant recipients, at any time.

About Contentserv

Contentserv's software solutions enable manufacturers, brands and retailers to deliver rich, personalized and highly converting product experiences that delight customers, improve time to value and boost ROI.

Learn more at www.contentserv.com